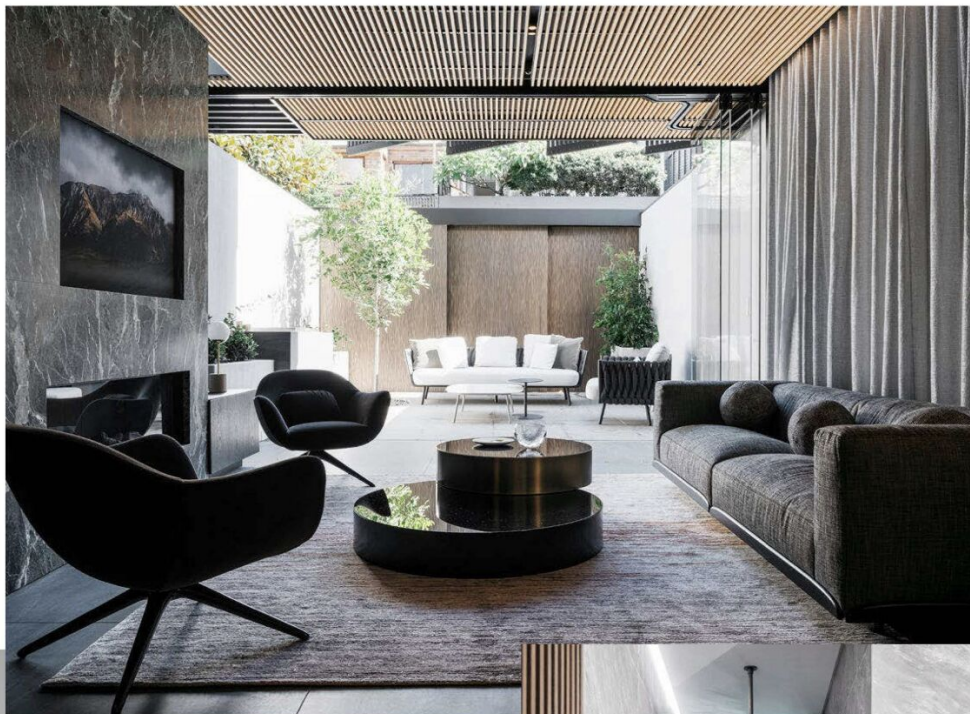


This page, clockwise from top left Verde Alpi Italian marble from Euro Marble makes a dramatic display in the kitchen, cladding benchtops, splashbacks and the rangehood. Zip HydroTap in Graphite and integrated PITT cooktop, both from Winning Appliances. A pair of photographic artworks by Sarah Ducker and a custom LED wall light by Nina Maya Interiors above an oak and brass dining table by Nina Maya Interiors, vintage 'Korium' dining chair by Tito Agnoli from The Vault Sydney, and Minotti 'Lou' side table by Christophe Delcourt from De De Ce. Sofa by Jean-Marie Massaud from Poliform against curtains by Lovelight.

Opposite page Oak and brass dining table by Nina Maya Interiors, 'Korium' chair from The Vault Sydney and bronze artwork by Oliver Tanner.



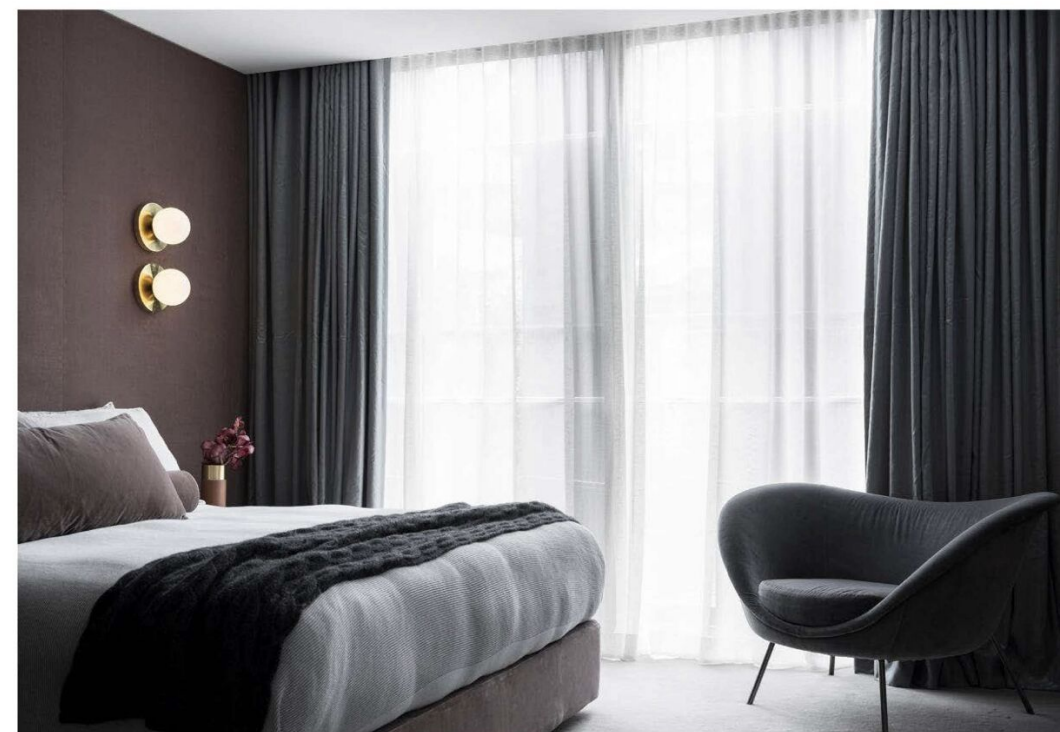
NINA MAYA of Nina Maya Interiors took on the interior architecture and design in the building of her own split-level contemporary home in Sydney. ninamayainteriors.com

What was the brief? My husband and I had lived in Paddington for years and stumbled across this tired bungalow that had not traded or been modified in 100 years. The brief was to transform what was a dark, derelict space into a light-filled home. *What were the challenges of the space and how did you resolve them?* The main challenge was the tight block of 133sq/m. So, we demolished the existing dwelling and excavated the entire block. We gained enough height to build a three-bedroom contemporary home across three split levels utilising as much glass as possible to let in light from every angle. We decided to fill the space with rich, luxe finishes so it would feel like a jewel box upon entering from the street. *Describe the completed interior?* Minimal, contemporary and sleek. Starting with a largely neutral grey palette for the interiors, we layered this with some striking green marble to create a strong focal point and added a slatted timber ceiling for warmth. *What are some favourite elements?* Were there any devices

used to maximise the sense of space? The central water feature below the open floating stairwell is a favourite. The combination of running water from the fountain, double-height glazing looking onto a lush internal courtyard and a full wall of mirror creates such a Zen-like feeling throughout the space and reflects the natural light. *What informed the selection of art, furniture and fittings?* To give the space a bespoke look, we sourced contemporary and vintage pieces and designed and custom-made key items. The dining room features a square oak and brass dining table that we paired with vintage rust-coloured leather 'Tito Agnoli' 'Korium' chairs and a Minotti 'Lou' side table used as a stool. All fittings and finishes were handmade and customised to the finest detail with a focus on natural materials such as solid oak, Italian marble, slatted timber, aged brass and fluted glass to give the interiors a feeling of luxury and retreat. *How do you use the space?* It is a joy to live in a home we have designed from the bottom up and experience every little detail on a daily basis. We love entertaining and being able to open up to the courtyard creates a seamless indoor/outdoor flow and feeling of space.



This page, clockwise from top 'Mad' armchairs by Marcel Wanders from Poliform surround a custom coffee table by Nina Maya Interiors on a rug from Designer Rugs. In the courtyard, Tribù 'Tosca' outdoor sofa and armchair from Cash Living and custom brass-panelled door by Axoloti. Italian porcelain bathroom tiles from Cerastone with tapware from Rogerseller. Custom porcelain vanity and mirror by Nina Maya Interiors with 'Mini Glo-Balls' wall lights from Euroluca and Cassina 'Utrecht' armchair from Space. **Opposite page, from top** In the main ensuite, 'Arch' wall lights from Douglas and Bec, 'Eccentric' tapware from Rogerseller, Italian porcelain tiles from Cerastone, and 'Tabou' suede pouf by Michaël Verheyden. Custom bed, cushions and upholstered wall panels, all by Nina Maya Interiors, with 'Line' wall lights by Douglas and Bec, and linen and cashmere throw from Bemboka. Molteni&C armchair by Gio Ponti against silk and linen curtains by Lovellight.





Photographs
TOM FERGUSON

INTERIOR DESIGNER
Heidi Onisforou
CRYSTAL PALACE
/ Potts Point /



This page, from top Poliform joinery and a Carrara bench top from Euro Marble form the basis of the kitchen, while a Valentino 'Da Ma' pendant light brings a touch of glamour to the space. A sofa from Poliform draped with a throw from Macleay on Manning sits in front of wall panelling from Conley & Co, with an armchair from RH sitting to the side. *Social Climbers* artwork by Joanna Braithwaite from Martin Browne Contemporary.
Opposite page A Todd Boontje-designed Swarovski 'Blossom' chandelier from De De Ce hangs above the dining table from The Country Trader with dining chairs from Poliform. Artwork by Anke Schofield from Aspen Grove Fine Arts.

